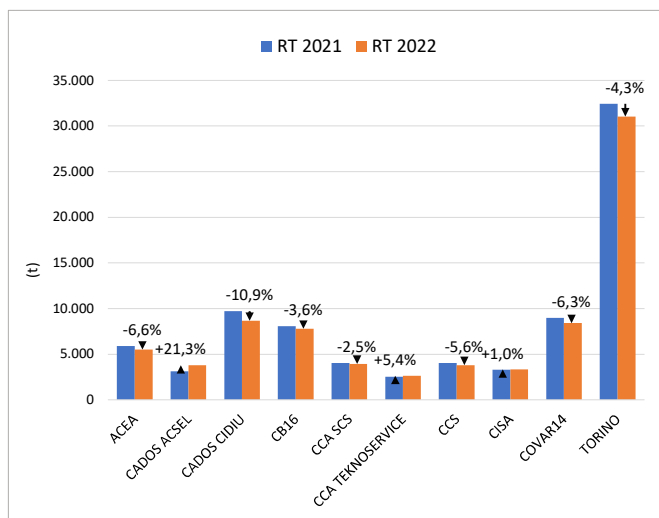


# PRODUZIONE TOTALE DI RIFIUTI URBANI (RT) (t) PER AMBITO E VARIAZIONE % 2022/2021

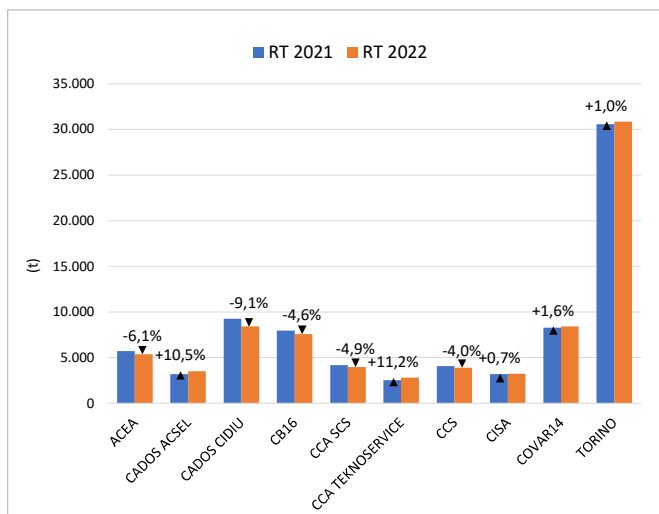
## GENNAIO

AMBITO	2021	2022	Δ% 22/21
ACEA	5.894	5.503	-6,6%
CADOS ACSEL	3.131	3.798	21,3%
CADOS CIDIU	9.724	8.666	-10,9%
CB16	8.081	7.789	-3,6%
CCA SCS	4.041	3.941	-2,5%
CCA TEKNOSERVICE	2.515	2.651	5,4%
CCS	4.025	3.799	-5,6%
CISA	3.312	3.346	1,0%
COVAR14	8.970	8.402	-6,3%
TORINO	32.455	31.047	-4,3%
<b>CMTO</b>	<b>82.148</b>	<b>78.943</b>	<b>-3,9%</b>



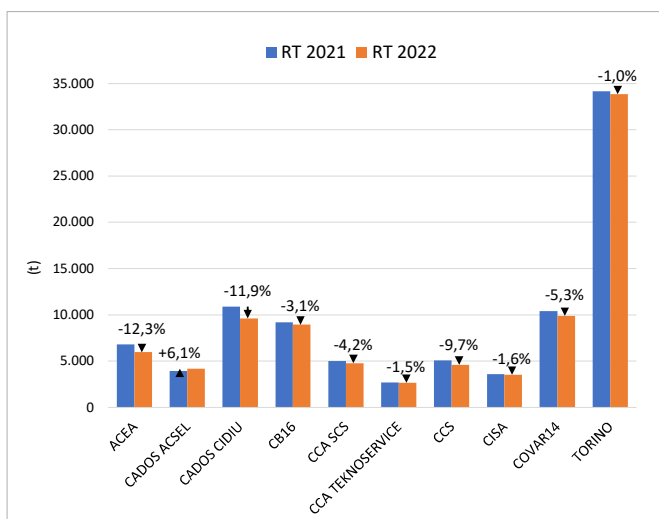
## FEBBRAIO

AMBITO	2021	2022	Δ% 22/21
ACEA	5.706	5.357	-6,1%
CADOS ACSEL	3.189	3.524	10,5%
CADOS CIDIU	9.243	8.398	-9,1%
CB16	7.954	7.587	-4,6%
CCA SCS	4.176	3.971	-4,9%
CCA TEKNOSERVICE	2.505	2.785	11,2%
CCS	4.051	3.888	-4,0%
CISA	3.195	3.216	0,7%
COVAR14	8.289	8.418	1,6%
TORINO	30.576	30.880	1,0%
<b>CMTO</b>	<b>78.883</b>	<b>78.024</b>	<b>-1,1%</b>



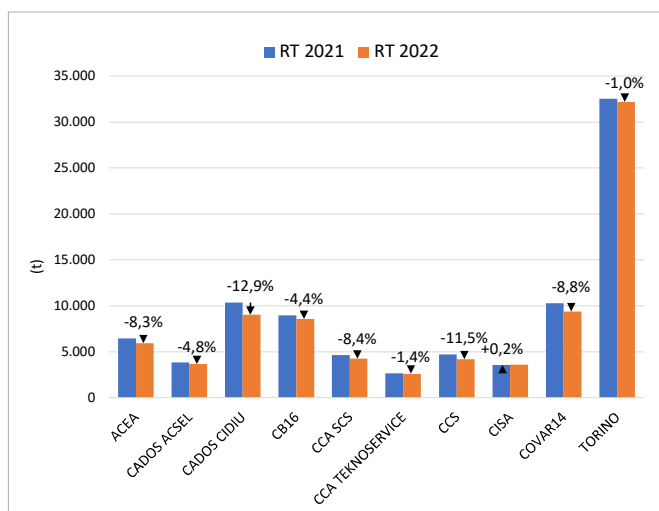
## MARZO

AMBITO	2021	2022	Δ% 22/21
ACEA	6.783	5.950	-12,3%
CADOS ACSEL	3.946	4.186	6,1%
CADOS CIDIU	10.900	9.607	-11,9%
CB16	9.212	8.924	-3,1%
CCA SCS	4.986	4.775	-4,2%
CCA TEKNOSERVICE	2.685	2.645	-1,5%
CCS	5.082	4.589	-9,7%
CISA	3.568	3.511	-1,6%
COVAR14	10.424	9.876	-5,3%
TORINO	34.189	33.851	-1,0%
<b>CMTO</b>	<b>91.775</b>	<b>87.915</b>	<b>-4,2%</b>



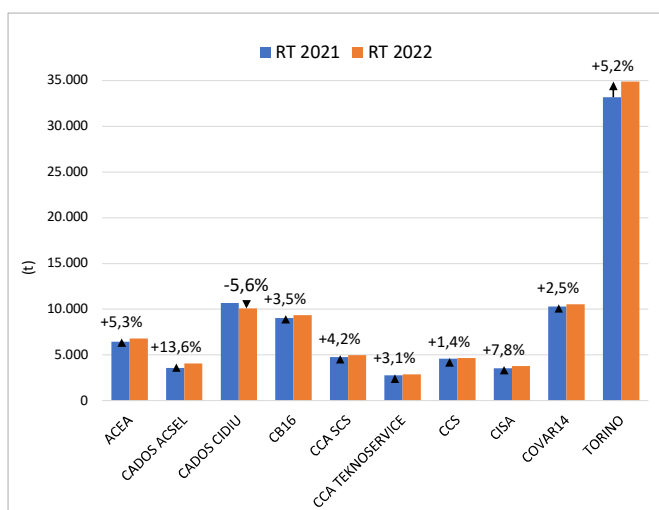
## APRILE

AMBITO	2021	2022	Δ% 22/21
ACEA	6.466	5.932	-8,3%
CADOS ACSEL	3.837	3.655	-4,8%
CADOS CIDIU	10.364	9.023	-12,9%
CB16	8.971	8.577	-4,4%
CCA SCS	4.645	4.256	-8,4%
CCA TEKNOSERVICE	2.648	2.611	-1,4%
CCS	4.736	4.192	-11,5%
CISA	3.569	3.577	0,2%
COVAR14	10.289	9.387	-8,8%
TORINO	32.507	32.188	-1,0%
<b>CMTO</b>	<b>88.032</b>	<b>83.398</b>	<b>-5,3%</b>



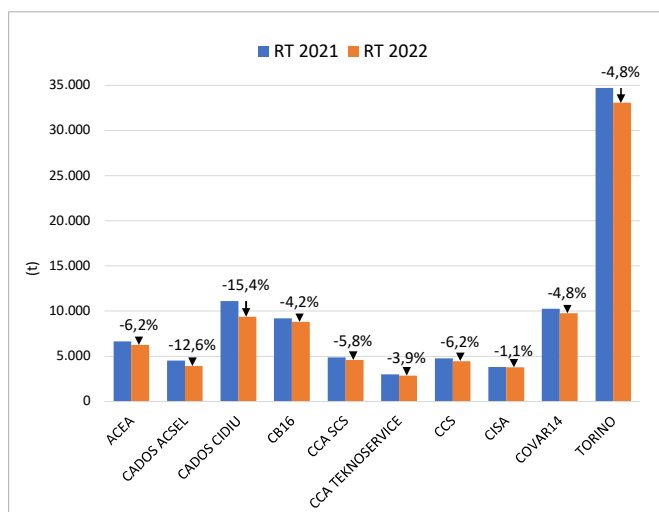
## MAGGIO

AMBITO	2021	2022	Δ% 22/21
ACEA	6.466	6.809	5,3%
CADOS ACSEL	3.588	4.076	13,6%
CADOS CIDIU	10.677	10.075	-5,6%
CB16	9.045	9.359	3,5%
CCA SCS	4.787	4.989	4,2%
CCA TEKNOSERVICE	2.784	2.870	3,1%
CCS	4.593	4.659	1,4%
CISA	3.531	3.805	7,8%
COVAR14	10.293	10.554	2,5%
TORINO	33.172	34.880	5,2%
<b>CMTO</b>	<b>88.936</b>	<b>92.077</b>	<b>3,5%</b>



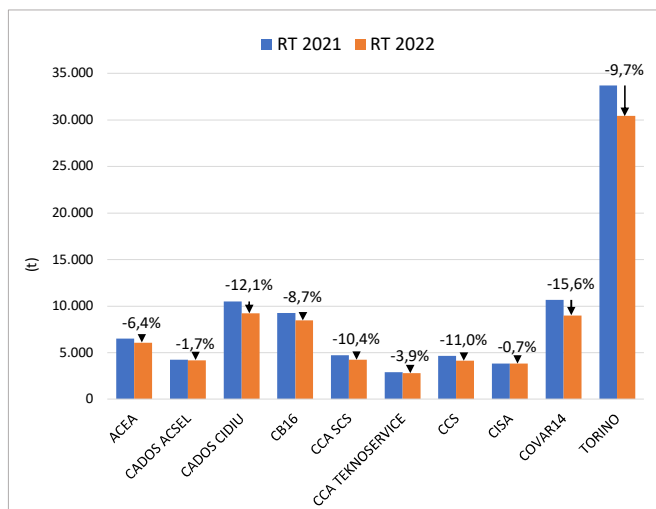
## GIUGNO

AMBITO	2021	2022	Δ% 22/21
ACEA	6.659	6.244	-6,2%
CADOS ACSEL	4.500	3.931	-12,6%
CADOS CIDIU	11.098	9.390	-15,4%
CB16	9.192	8.802	-4,2%
CCA SCS	4.889	4.608	-5,8%
CCA TEKNOSERVICE	2.992	2.874	-3,9%
CCS	4.770	4.473	-6,2%
CISA	3.818	3.777	-1,1%
COVAR14	10.250	9.763	-4,8%
TORINO	34.719	33.054	-4,8%
<b>CMTO</b>	<b>92.887</b>	<b>86.916</b>	<b>-6,4%</b>



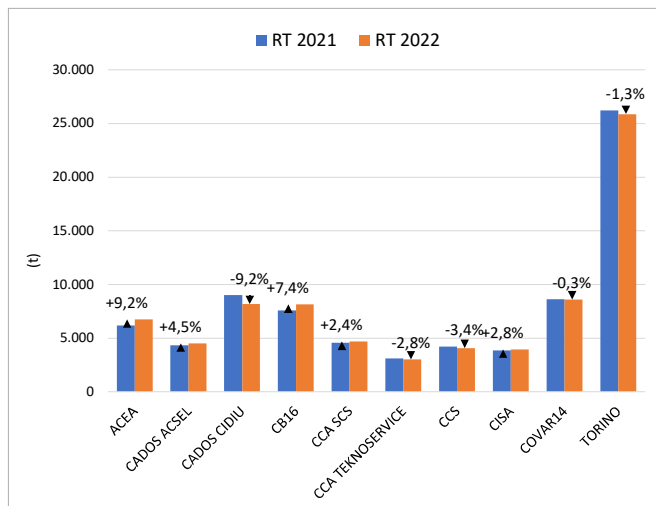
## LUGLIO

AMBITO	2021	2022	Δ% 22/21
ACEA	6.495	6.082	-6,4%
CADOS ACSEL	4.262	4.190	-1,7%
CADOS CIDIU	10.509	9.241	-12,1%
CB16	9.272	8.468	-8,7%
CCA SCS	4.732	4.239	-10,4%
CCA TEKNOSERVICE	2.900	2.787	-3,9%
CCS	4.635	4.127	-11,0%
CISA	3.842	3.813	-0,7%
COVAR14	10.671	9.004	-15,6%
TORINO	33.700	30.421	-9,7%
<b>CMTO</b>	<b>91.018</b>	<b>82.372</b>	<b>-9,5%</b>



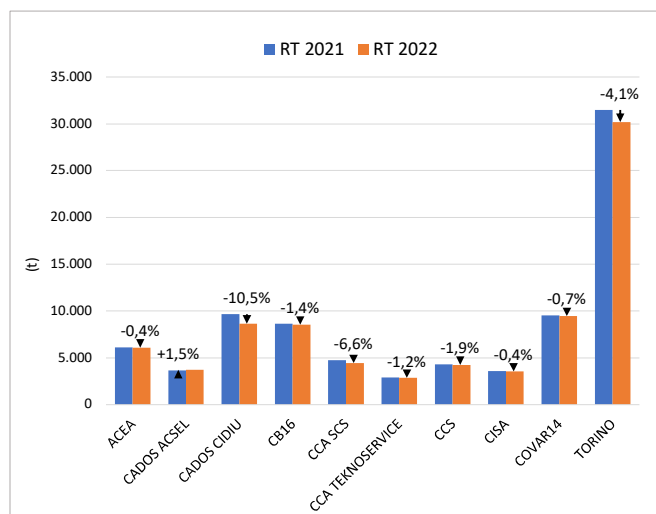
## AGOSTO

AMBITO	2021	2022	Δ% 22/21
ACEA	6.187	6.758	9,2%
CADOS ACSEL	4.332	4.527	4,5%
CADOS CIDIU	9.008	8.180	-9,2%
CB16	7.578	8.140	7,4%
CCA SCS	4.580	4.691	2,4%
CCA TEKNOSERVICE	3.105	3.019	-2,8%
CCS	4.212	4.071	-3,4%
CISA	3.855	3.963	2,8%
COVAR14	8.632	8.605	-0,3%
TORINO	26.222	25.880	-1,3%
<b>CMTO</b>	<b>77.712</b>	<b>77.833</b>	<b>0,2%</b>



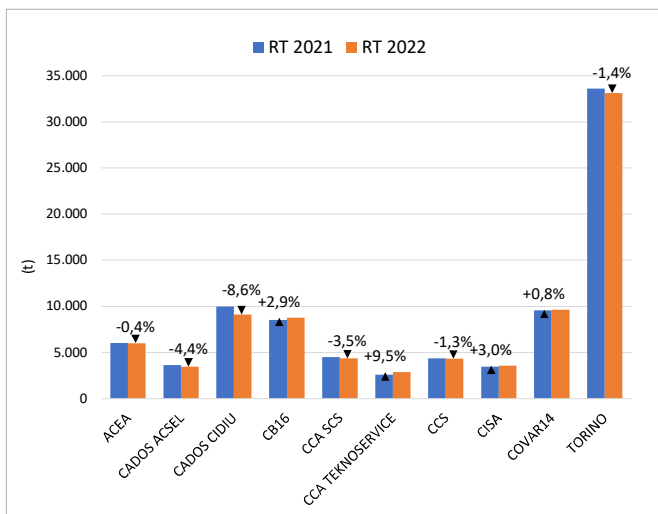
## SETTEMBRE

AMBITO	2021	2022	Δ% 22/21
ACEA	6.106	6.080	-0,4%
CADOS ACSEL	3.647	3.701	1,5%
CADOS CIDIU	9.666	8.649	-10,5%
CB16	8.654	8.533	-1,4%
CCA SCS	4.745	4.431	-6,6%
CCA TEKNOSERVICE	2.885	2.851	-1,2%
CCS	4.309	4.229	-1,9%
CISA	3.554	3.538	-0,4%
COVAR14	9.528	9.458	-0,7%
TORINO	31.492	30.193	-4,1%
<b>CMTO</b>	<b>84.585</b>	<b>81.664</b>	<b>-3,5%</b>



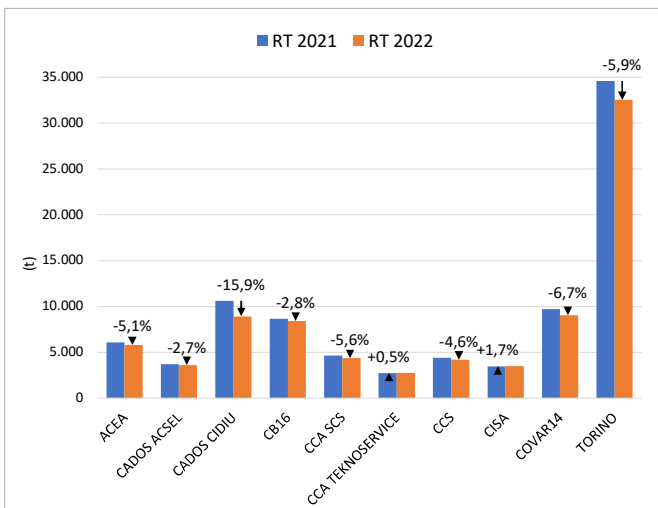
## OTTOBRE

AMBITO	2021	2022	Δ% 22/21
ACEA	6.046	6.024	-0,4%
CADOS ACSEL	3.644	3.484	-4,4%
CADOS CIDIU	9.990	9.128	-8,6%
CB16	8.540	8.788	2,9%
CCA SCS	4.518	4.362	-3,5%
CCA TEKNOSERVICE	2.616	2.866	9,5%
CCS	4.382	4.326	-1,3%
CISA	3.477	3.582	3,0%
COVAR14	9.585	9.659	0,8%
TORINO	33.611	33.132	-1,4%
<b>CMTO</b>	<b>86.410</b>	<b>85.351</b>	<b>-1,2%</b>



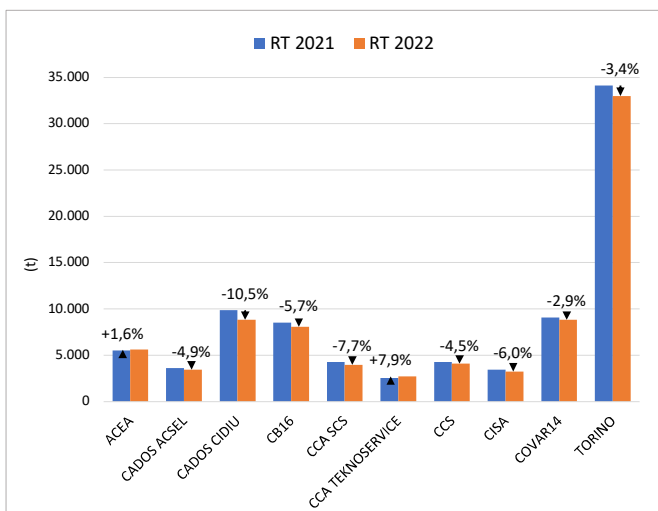
## NOVEMBRE

AMBITO	2021	2022	Δ% 22/21
ACEA	6.104	5.796	-5,1%
CADOS ACSEL	3.710	3.608	-2,7%
CADOS CIDIU	10.610	8.927	-15,9%
CB16	8.672	8.428	-2,8%
CCA SCS	4.633	4.373	-5,6%
CCA TEKNOSERVICE	2.757	2.770	0,5%
CCS	4.414	4.213	-4,6%
CISA	3.443	3.500	1,7%
COVAR14	9.712	9.063	-6,7%
TORINO	34.581	32.525	-5,9%
<b>CMTO</b>	<b>88.637</b>	<b>83.203</b>	<b>-6,1%</b>



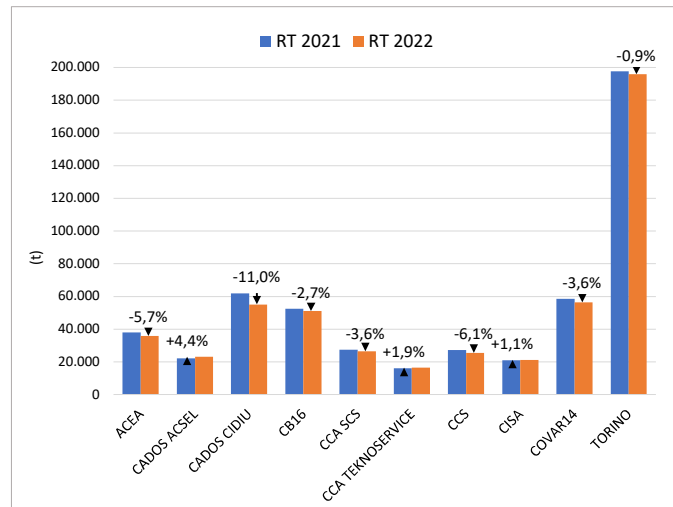
## DICEMBRE

AMBITO	2021	2022	Δ% 22/21
ACEA	5.509	5.596	1,6%
CADOS ACSEL	3.624	3.448	-4,9%
CADOS CIDIU	9.857	8.822	-10,5%
CB16	8.541	8.052	-5,7%
CCA SCS	4.293	3.962	-7,7%
CCA TEKNOSERVICE	2.518	2.718	7,9%
CCS	4.272	4.079	-4,5%
CISA	3.450	3.244	-6,0%
COVAR14	9.086	8.826	-2,9%
TORINO	34.130	32.981	-3,4%
<b>CMTO</b>	<b>85.279</b>	<b>81.729</b>	<b>-4,2%</b>



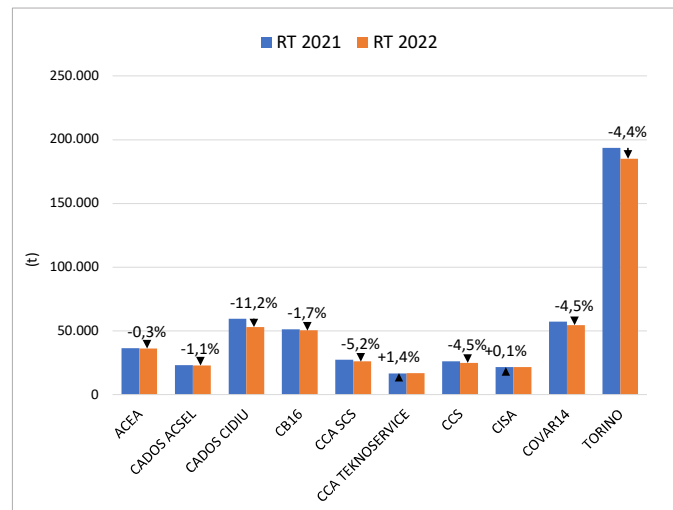
## I SEMESTRE

AMBITO	2021	2022	Δ% 22/21
ACEA	37.974	35.795	-5,7%
CADOS ACSEL	22.191	23.171	4,4%
CADOS CIDIU	62.006	55.159	-11,0%
CB16	52.454	51.038	-2,7%
CCA SCS	27.523	26.540	-3,6%
CCA TEKNOSERVICE	16.129	16.437	1,9%
CCS	27.257	25.600	-6,1%
CISA	20.994	21.232	1,1%
COVAR14	58.515	56.400	-3,6%
TORINO	197.618	195.901	-0,9%
<b>CMTO</b>	<b>522.661</b>	<b>507.274</b>	<b>-2,9%</b>



## II SEMESTRE

AMBITO	2021	2022	Δ% 22/21
ACEA	36.448	36.336	-0,3%
CADOS ACSEL	23.219	22.959	-1,1%
CADOS CIDIU	59.639	52.948	-11,2%
CB16	51.258	50.409	-1,7%
CCA SCS	27.501	26.058	-5,2%
CCA TEKNOSERVICE	16.781	17.009	1,4%
CCS	26.224	25.044	-4,5%
CISA	21.621	21.640	0,1%
COVAR14	57.215	54.615	-4,5%
TORINO	193.736	185.132	-4,4%
<b>CMTO</b>	<b>513.642</b>	<b>492.152</b>	<b>-4,2%</b>



## ANNUALE

AMBITO	2021	2022	Δ% 22/21
ACEA	74.422	72.132	-3,1%
CADOS ACSEL	45.410	46.130	1,6%
CADOS CIDIU	121.646	108.107	-11,1%
CB16	103.712	101.448	-2,2%
CCA SCS	55.024	52.598	-4,4%
CCA TEKNOSERVICE	32.910	33.446	1,6%
CCS	53.481	50.644	-5,3%
CISA	42.614	42.873	0,6%
COVAR14	115.729	111.015	-4,1%
TORINO	391.354	381.033	-2,6%
<b>CMTO</b>	<b>1.036.303</b>	<b>999.426</b>	<b>-3,6%</b>

