



Regional Technology Clustering Fund

Gillian Slattery. 27th April 2023

Background & Context

- The European Commission DG GROW Industrial Forum, Alliances & Clusters head of Unit, Ulla Engelman -
- Clustering - Key feature of the EU Economy.
- 3,000 clusters in Europe
- 1 in 4 jobs and half of all exporting jobs.
- 30 national programmes in 20 EU Countries,
- Key activities of EU clusters include cross sectoral collaboration, support for SMEs and Internationalisation of its industry members.

Clusters matter



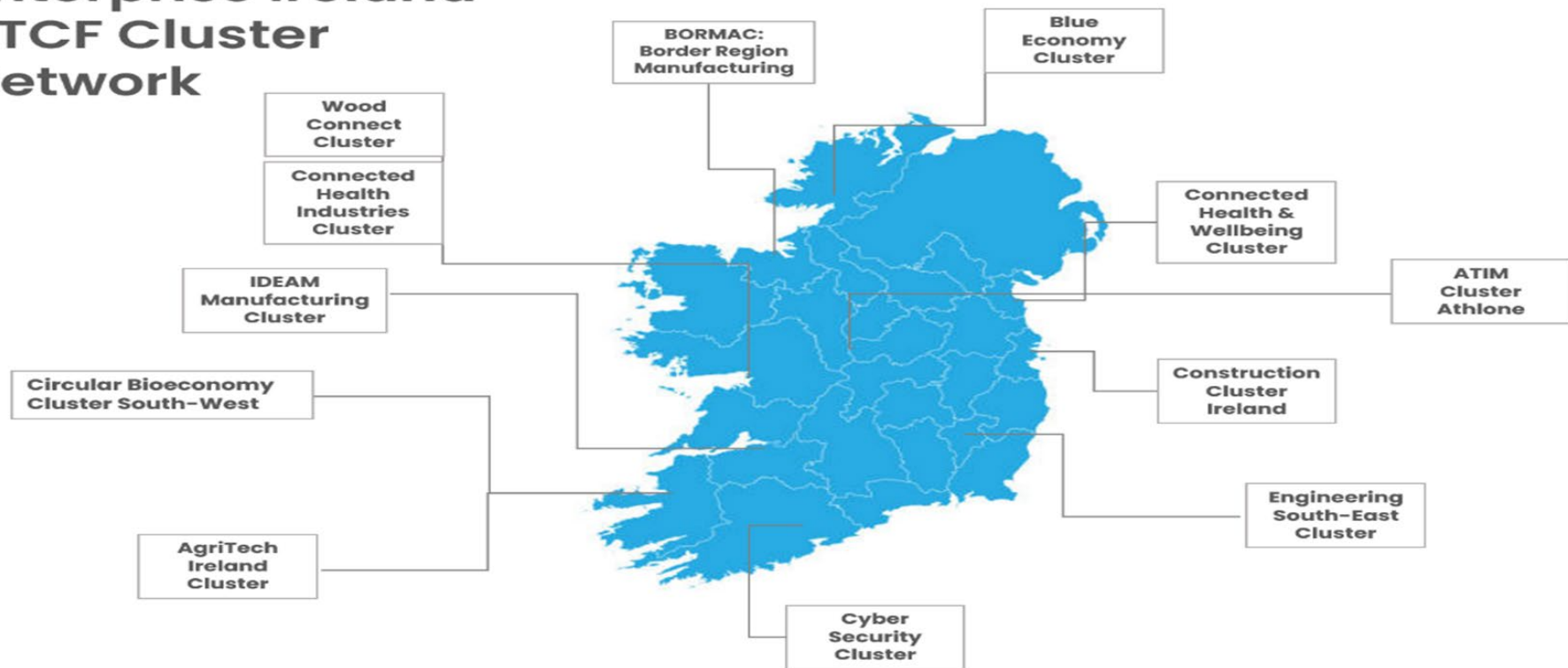
Regional Technology Clustering Fund

- Enterprise Ireland – Government body responsible for the development and growth of Irish enterprises in world markets.
- Under Project Ireland 2040 Government identified an ambition to build sectoral clusters of Small Medium Enterprises (SMEs) at regional level.
- The competitive Regional Technology Cluster fund was launched by Enterprise Ireland and was open to the Institutes of Technology (IoT) / Technological Universities (TU) in 2019.

Objective - To support the IoT's/TU's to establish and develop clusters to achieve –

- Increased SME productivity;
- Drive SME competitiveness; and
- Support internationalisation activity.

Enterprise Ireland RTCF Cluster Network



RTCF - Progress to date

- 12 Cluster Managers in place from Sept 2020 to June 2021
- Training to date
- Framework & network meetings.
- TCI Network
- Relationship with third level institutes are key – industry engagement.
- Clusters moving from Regional to National and international outreach.

RTCF Membership

Membership summary data RTCF

No	Cluster	Institute	No of members	Size			Govt Body	Client	
				Small	Medium	Large		LEO	EI
1	Agritech Cluster	MTU Tralee	28	21	6	1	0	13	15
2	Construction Cluster Ireland	TUD	34	22	10	1	1	2	4
3	Killybegs Marine Cluster	ATU Donegal	20	10	7	3	0	5	10
4	Connected Health Cluster	DKIT	34	10	14	4	6	4	20
5	Cyber Ireland	MTU Cork	155	29	50	49	22	20	95
6	Circular Bio Economy Cluster	MTU Tralee	44	31	8	3	2	22	22
7	Atim	TUS Athlone	65	35	20	9	3	7	51
8	IDEAM	TUS Limerick	134	85	29	21	0	29	100
9	Engineering the South East	SETU	54	19	23	12	0	15	34
10	Med Tech Cluster	ATU Galway	36	22	1	13	0	4	16
11	Wood Connect	ATU Galway	65	36	25	3	1	7	53
12	BORMAC	ATU Sligo	15	8	6	3	0	2	15
	Total		684	328	199	122	35	130	435

RTCF Large Industry Members

Cluster	Institute	Company
Agricluster	MTU Tralee	Dairymaster
Construction Cluster Ireland	TUD	Wavin
Cyber Ireland	MTU Cork	Aon Ireland Ltd t/a Aon
Cyber Ireland	MTU Cork	CISCO
Cyber Ireland	MTU Cork	Hewlett Packard Enterprise
Cyber Ireland	MTU Cork	Logitech Ireland Services
Cyber Ireland	MTU Cork	Microsoft
Cyber Ireland	MTU Cork	Northern Trust
Cyber Ireland	MTU Cork	Vitalograph
Killybegs Marine Cluster	ATU Donegal	Atlantic Dawn Group
Killybegs Marine Cluster	ATU Donegal	SeaQuest Systems
Connected Health Cluster	DKIT	Amazon Web Services (AWS)
Connected Health Cluster	DKIT	IBM
Wood Connect	ATU Galway	Glennon Brothers
Wood Connect	ATU Galway	Kingspan Century
Wood Connect	ATU Galway	Sisk
Circular Bio Economy	MTU Kerry	Fexco
Circular Bio Economy	MTU Kerry	Kerry Group
Engineering the South East	SETU	Alltech
Engineering the South East	SETU	Integer
Engineering the South East	SETU	Bausch & Lomb
Engineering the South East	SETU	Danone
Engineering the South East	SETU	Dawn Meats Group
Med Tech Cluster	ATU Galway	Aerogen
Med Tech Cluster	ATU Galway	Microsoft, Dublin
Med Tech Cluster	ATU Galway	Dell, Limerick
Med Tech Cluster	ATU Galway	Boston Scientific Clonmel & Galway Facilities
Med Tech Cluster	ATU Galway	Medtronic Galway
Med Tech Cluster	ATU Galway	McKinsey, Dublin
Med Tech Cluster	ATU Galway	Novartis, Dublin

RTCF Steering Groups

RTCF - Chair of Steering Committees				
No	Cluster	Institute	Chair	Company
1	AgriTech Cluster	MTU Tralee	Robert Shine	SAMCO Agricultural Machinery Ltd
2	Construction Cluster Ireland	TUD	Housseem Jerbi	Smart PMO Ltd
3	Killybegs Marine Cluster	ATU Donegal	Karl Bonner	Educational Outreach Manager/Cluster manager
4	Connected Health Cluster	DKIT	Thomas Coleman	Zendra Health
5	Cyber Ireland	MTU Cork	Pat Larkin	Ward Solutions
6	Circular Bio Economy Cluster	MTU Tralee	Cal Flynn	Kerry Group
7	Atim	TUS Athlone	Tony Woods	Midland Steel Reinforcement Supplies
8	IDEAM	TUS Limerick	Patrick Byrnes	Croom Precision Medical
9	Engineering the South East	SETU	Michael Carbery	Keenan Alltech
10	Med Tech Cluster	ATU Galway	Rick Officer	ATU Galway Head of Research
11	Wood Connect	ATU Galway	John Desmond	Cygnium
12	BORMAC	ATU Sligo	Andrew Hodson	Verus Metrology Partners

Cyber Ireland – MTU Cork

CYBER IRELAND 2023

JANUARY

- Cyber4AM Project Kick-Off
- NCSS MTR Webinar
- CI4 Pilot Launch
- SME R&D Workshop

FEBRUARY

- South Chapter/CorkSec Career Event
- North-West Skills Audit Report Launch
- Cyber Careers 4 Students Meeting

MARCH

- South Chapter/CorkSec Career Event
- OTSec SIG Event
- Dublin Chapter Launch
- CISO Forum Meeting

APRIL

- South Chapter/CorkSec Career Event
- Cyber Schools CTF, Dublin
- Talent Forum Meeting

MAY

- R&D Workshop
- CISO Forum Meeting
- Cyber Cluster Survey Launch

JUNE

- Membership 2023 – 2024
- Cyber Academy 4 Students
- Cyber4AM at Manufacturing Conferences Irl & NI

JULY

AUGUST

SEPTEMBER

- Talent Forum Meeting
- CISO Forum Meeting
- R&D Workshop

OCTOBER

- Cyber Security Month
- Cyber Ireland National Conference
- Student Start-up Hackathon @ MTU

NOVEMBER

- Cyber Research Conference
- Talent Forum Meeting
- CISO Forum Meeting

DECEMBER

- Regional Chapters Meet-ups



IDEAM – TUS Limerick

NATIONAL INDUSTRY FUNDING



Funding Source	Beneficiaries	Funding Amount
Digitalisation Voucher		€52,000.00
EI Discovery Grant		€10,000.00
IDEAM Industry Engagement Vouchers		€15,182.04
Digital Start & Online Trading Voucher		€4,500.00 & €2,500.00
ITI Business Solutions Voucher		€2,250.00 - €5,625.00



Total €89,807.04 National Industry Funding

IDEAM – TUS Limerick

INTERNATIONALISATION



Large Scale



€1,499,999.00 Million Erasmus+ Project
€188,470 TUS/IDEAM Awarded



€1,438,888.92 Million COSME Project
€74,216.27 TUS/IDEAM Awarded
€ 1,050,000 Cascade Funding (2 Open Calls)



€4,999,646.25 Million Horizon Europe
€265,370 TUS/IDEAM Awarded
€3,015,000 Cascade Funding (2 Open Calls)

Small Scale



€40,000 out of €200,000 Assessment Voucher
€90,000 Deployment Voucher successful



€60,000 Erasmus+ Project
€20,000 TUS/IDEAM Awarded



€35,000 InterTradeIreland Synergy Project
€17,500 TUS/IDEAM Awarded



€100,000 InterTradeIreland Synergy Project
€50,000 TUS/IDEAM Incoming

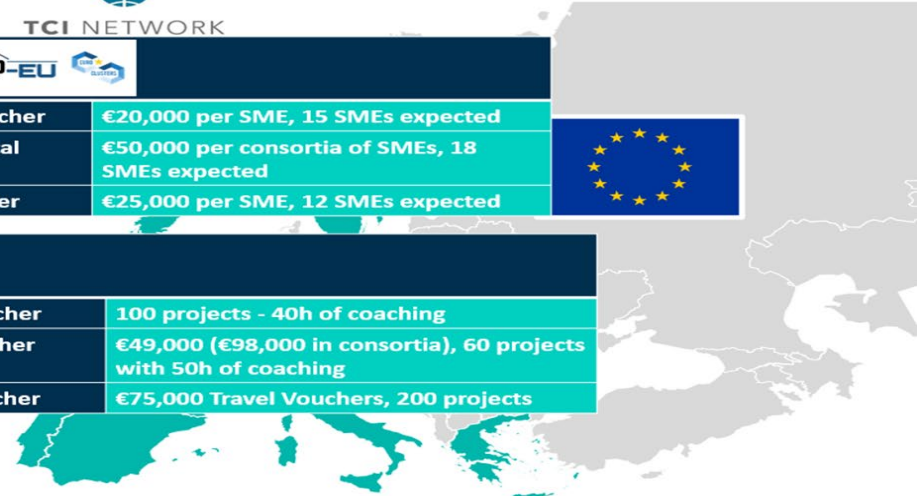


TCI NETWORK

Innovate Voucher	€20,000 per SME, 15 SMEs expected
Green & Digital Voucher	€50,000 per consortia of SMEs, 18 SMEs expected
Global Voucher	€25,000 per SME, 12 SMEs expected



Innovate Voucher	100 projects - 40h of coaching
Develop Voucher	€49,000 (€98,000 in consortia), 60 projects with 50h of coaching
Incubate Voucher	€75,000 Travel Vouchers, 200 projects



ATiM – TUS Midlands



Key Indicators



Industry Members

62



Number of employees

>7049



Estimated Turnover
Cumulative

>650M

Connections & engagement

2289

Engaged in direct activities

In-person workshop
attendance

151

202

Innovation Circle attendance

Engagement through
International fora

620

176

Signed up to newsletter

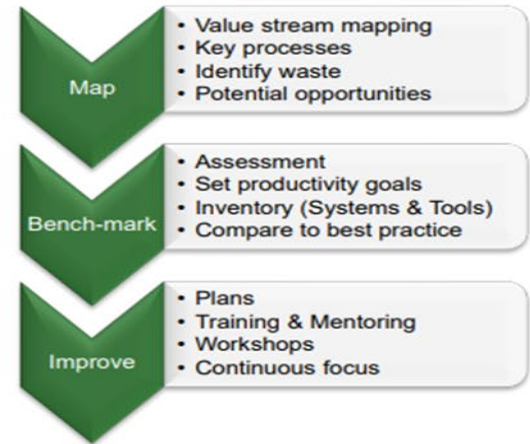
Partnership agreements

2

AgriTech Ireland – MTU Kerry

Process Optimiser (CompEAT)

- ❑ Goal: Optimise business processes using LEAN with Value Stream Mapping
- ❑ Delivery partners ACE & AgriTech Cluster
- ❑ Skills: Value Stream Mapping Level 8, NFQ 5-credits from MTU
- ❑ 3 x Cohorts completed programme: 7 x companies, 24 participants
- ❑ New: Added Continuous Improvement Mentoring + 5 Credits. Cohort 1 on this as a follow-up, 13 across 4 companies
- ❑ Potential: Additional modules e.g. Six Sigma, Project Management...
- ❑ Status: Process Optimiser is now a “paid for” service offered by the cluster.

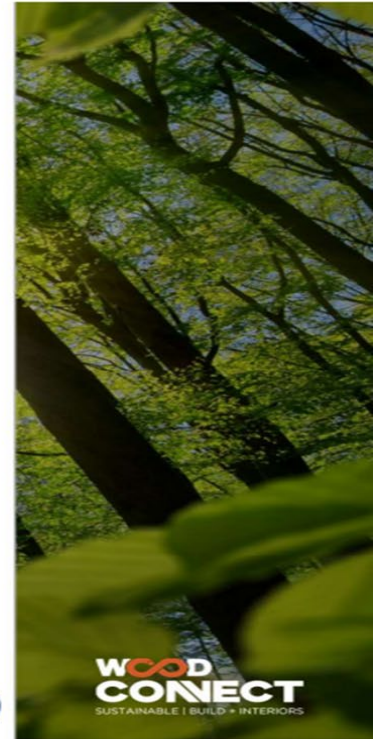
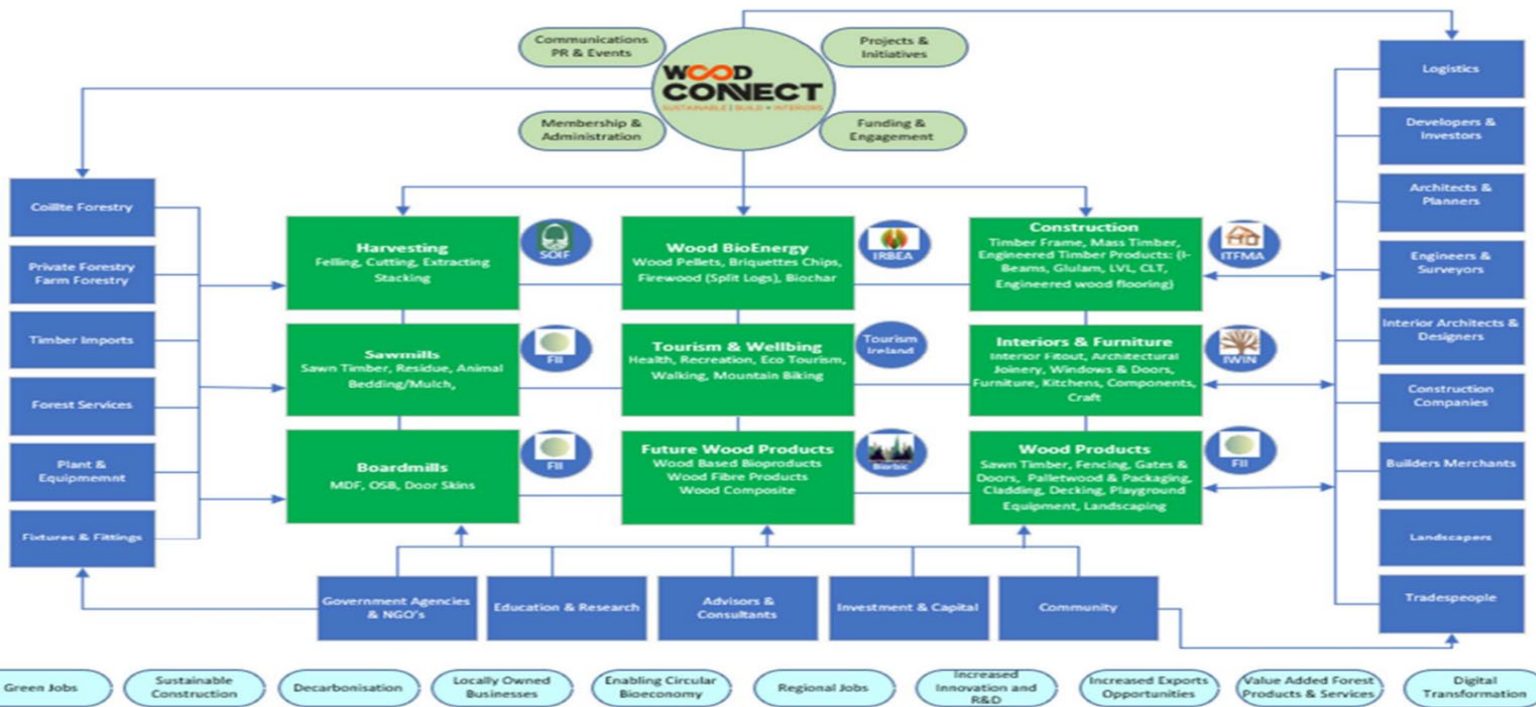


Collaboration

Productivity

Digitalisation

Wood Connect – ATU Galway



Killybegs Marine Cluster - ATU Donegal

About Killybegs Marine Cluster

- The Killybegs blue economy currently comprises of seven blue economy marine sectors including Commercial Fishing (Base Industry), Fish Processing, Marine Engineering, Aquaculture, Renewable Energies, Offshore Marine Services and Marine Tourism
- The Killybegs Marine Cluster currently has 20 members across these sectors. Together, they have a combined annual turnover in excess of €300 million, while providing employment for more than 1,000 people within these blue economy industries
- Internationally focused with 95% of turnover generated from export markets
- 60% of our membership is Marine Engineering companies – we have 350 + highly skilled Marine Engineering available
- Killybegs have a proven track record in delivery of major marine offshore projects



An Roinn Talmhaíochta,
Bia agus Mara
Department of Agriculture,
Food and the Marine



Comhairle Contae
Dhún na nGall
Donegal County Council

Difig Fiontar Áitiúil
Local Enterprise Office
Donegal



Oifisoll
Teicneolaíochta
an Atráinigh
Atlantic
Technological
University

BORMAC – ATU Sligo

BORMAC & GEMX collaboration



The focus of the NOW program was to develop a roadmap for change through peer engagement and learning. What shared challenges companies are facing, as a group, as a region? The program brought together 15 companies (7 BORMAC, 8 GEMX) in the Northwest that are all on different stages of their growth journey.

Session 1

What does NOW look like?

Session 2

A Future Worth Fighting For

Session 3

Building a Culture that Attracts & Retains Talent

Session 4

How Healthy is Your Employer Brand

Session 5

Best Practice Innovation Visit

Workstreams

- MedTech Cluster – ATU Galway
 - Respiratory
 - Insurance services for Med tech companies
- Engineering the South East – SETU – High Voltage worksteam & Renewable energy
- Connected Health Cluster – DKIT
 - Active and healthy ageing – Reference site

RTCF Sustainability



Best Practice

- EU Best Practice case studies – ACCIO & Danish clusters – 6 year minimum.



Revenue Streams

Delivery of Programmes
Paid Membership models
Workstream Development
for industry



EU Projects

Many EU projects
underway with industry
partners and third level
partners.



Enterprise Ireland
East Point Business Park
The Plaza, Dublin 3
D03 E5R6

enterprise-ireland.com
+353 (1) 727 2000