

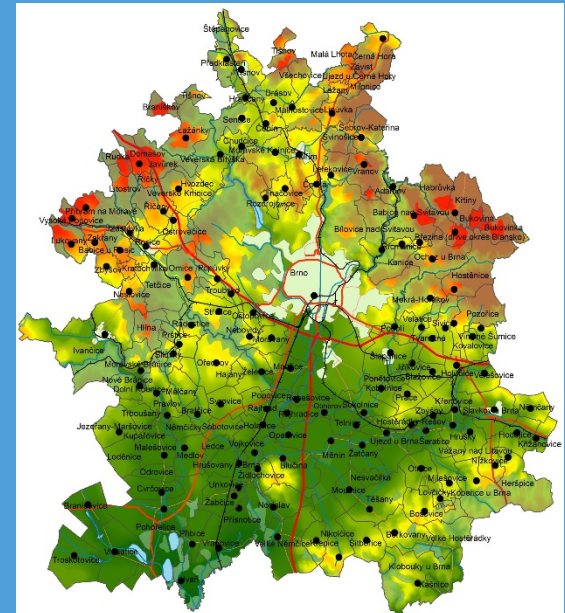
# Spatial dynamics and strategic planning in metropolitan areas – SPIMA



ESPON-ECTG Targeted analysis project  
Kick off meeting 28-29 November, 2016

Brno

Marie ZEŽULKOVA



WAGENINGEN  
UNIVERSITY & RESEARCH



# Brief introduction of city of Brno as a stakeholder in ESPON-SPIMA

- Key challenges addressed in planning of the city of Brno?
- Sustainable growth
- Deconcentration of services
- People mobility
- Infrastructure
- Socially excluded localities and localities with special needs
- Land use planning process and strategy planning process
- Future funding of integrated metropolitan projects



# Brief introduction of city of Brno as a stakeholder in ESPON-SPIMA

- Key expectations from the SPIMA project?
- New knowledge
- Best practices
- Justification of metropolitan planning
- European collaboration



# Why city of Brno needs a metropolitan planning approach (MPA)?

## Key needs for MPA:

- Collaborate between different governance levels: local, regional, national authorities, core city and neighbouring municipalities!!!
- Integrate sectoral policy issues in metropolitan area
- Coordinate preparation and decision making of land use and strategy plans
- Introduce a formal and informal metropolitan scale of spatial planning
- Attractiveness for investors (FDI)
- Establish overall metropolitan governance practices
- Future funding of integrated metropolitan projects

# Which key actors will benefit most from a metropolitan planning approach?

## Relevant actors:

- Inhabitants of Brno Metropolitan Area
- Municipalities
- Politicians
- National and regional authorities
- Community groups (NGO)



Marie Zezulkova  
[zezulkova.marie@brno.cz](mailto:zezulkova.marie@brno.cz)

+420 542 172 206

Brno City Municipality  
City Strategy Office

Contact person regarding SPIMA  
Roman Chmelar

[chmelar.roman@brno.cz](mailto:chmelar.roman@brno.cz)

+420 542 172 469



WAGENINGEN  
UNIVERSITY & RESEARCH